

# RETIREMENT MACHINERY SALE

## Monday, February 16th - 12 NOON

**NOTE: TIME  
DATE PLACE**

**911 Address: 3730 Esther Avenue Odebolt, IA 51458**

**NOTE: TIME  
DATE PLACE**

**DIRECTIONS:** From Odebolt, IA go 4 miles South on Hwy 39 to 370th St., then go West 1 mile to Esther Ave and then ¼ mile South.  
Or from Kiron, IA go 7 miles North on Hwy 39 to 370th St, then go West 1 mile to Esther Ave and then ¼ mile South.

**Come Early – Sale will last 1 ½ hours**

**This will be a live auction along with Auction Time bidding on-line. On-line bidding will start at 12 NOON. Online bidding will start with item #1 and go in succession.**

**OPEN HOUSE: 10 a.m. to 4 p.m. - Friday, Jan. 30th, Saturday, Jan. 31st, Sunday, February 1st**



### TRACTORS:

- #20 2005 JD 7820 Tractor – MFWD, power quad, 20 sp trans., 3 – SCV's, weights, 380/85R30 Front, 480/80R42 back duals, rubber approx. 45%, 2,265 hrs. SN#RW7820R032293
- #21 2008 CASE IH 215 Magnum Tractor – MFWD, front susp., power shift, 18 sp trans., 4-SCV's, weights, 380/85R34 front, 480/80R46 duals, rubber approx. 60%, front has stubble damage, 1770 hrs. SN# Z7RZ05828
- #22 2003 Case IH MX 210 Tractor: MFWD, power shift, 18 sp trans., 4 – SCV's, 380/85R34 front, new inner rear rubber 480/80R46, front has stubble damage, 2,450 hrs. SN#JAZ126857
- #23 1989 Case IH 7120 Tractor – MFWD, 18 sp PST trans., 3 – SCV's, 16.9R28 front, 18.4R42 duals, rubber approx.. 35%, 12 front wts., 7,430 hrs SN# JJA0017432
- #24 1993 Case IH 5250 Tractor w/ Buhler 695 Loader - LHR, 16 sp trans., 2 – SCV's, 14.9R24 front, 18.4R38 rear, rubber approx. 50%, complete w/Bale Spear & 8' Bucket, needs a little hood work 7,560 hrs., SN#JJF1025388

### COMBINES & HEADS:

- #25 2010 Case IH 6088 AFS Combine – pro 600 monitor, power fold, rock trap, lateral tilt, 480/80R42 Front, 18.4R26 rear, bought new, yearly shop maintenance with records, 1,740 separator hrs., 2,460 eng hrs., field ready...exc. cond. SN#Y9G003068
- #26 2022 Case IH 4408 Corn Head – 8 row 30", lateral tilt Sensor w/HHS, less than 1,500 acres SN# YNH636100; Sold with grain head mover
- #27 2020 Case IH 3020 terra Flex bean Head – 25', less than 1,500 acres SN# YLH232423; Sold with older grain head mover

### PLANTERS:

- #15 2012 Kinze 3600 Planter – 16 row 31 split, CCS fill, spike closed, coulters, mech trans. ½ shut off, planted beans only, bought new in 2014. Sold with KPM2 monitor, equipped w/starter fertilizer, has both corn & bean plates, less than 6,500 acres approx. SN# 624803

### PLANTERS CONTINUED:

- #16 2003 Kinze 3600 Planter – 16 row 30" , mech trans., finger pick up, KPM2 monitor, 800 gal liquid fertilizer, in furrow fert. coulters, yetter spoke closing wheels, both corn & bean plates, approx.. 13,000 acres SN# 617566

### TRUCKS & TRAILERS:

- #17 2017 Cascadia 125 Freightliner – Detroit 12.8 liter motor, automatic, 11/R22.5 rubber – 35%, DEF gone, 416K miles, this is a good truck SN#3AKFGEDV7HDHT7875
- #18 1995 Aerowca White GMC – M-11, 10 sp Cummins motor, 355 K miles SN 4V1VDBPFSN708169

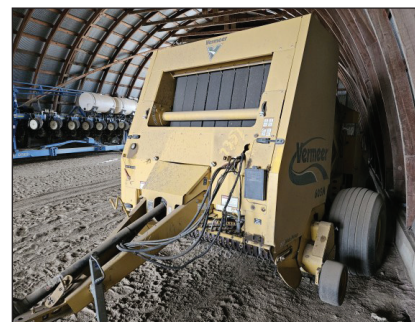
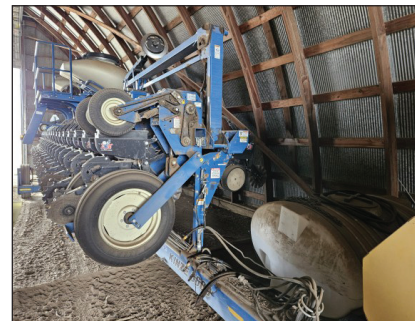
- #19 2004 Wilson AgHopper – 42', elec. tarp, near new rear rubber SN#1W1MAFYAX4A

### HAY EQUIPMENT – FIELD EQUIPMENT & FARM EQUIPMENT:

- #12 Rotogrind Bale Processor – SN# 985014
- #11 Vermeer 605 M Baler – bale kicker, 21.5 L16-1 tires, net wrap, only used on hay, 7,360 bales, SN#1VRV161858100278
- #10 Big Dog Dirt Scraper – 8 yds., exc. cond.
- #9 IH 133 Cultivator – 8 row, 30"
- #8 CAIH 490 Disk w/3 Bar Harrow – 28'
- #7 CAIH Case 5300 Drill – 15', 7 ½" spacing, small seed attach. SN# JAG0422270
- #6 Water Tank w/transfer pump – 1,000 gal
- #5 Schaben Tank on Tender Trailer – 1,000 gal. SN# 203360
- #4 2 – Schaben Tanks on Tender Trailer – 5,000 gal SN# 989158

### WAGONS & AUGERS:

- #14 2006 Kinze 1050 Grain Cart – plastic on augers, tarp, scale, 1250 R32 floater tires SN: 506507
- #13 2011 Kinze 1050 Grain Cart – plastic on augers, tarp, adj. spout, scale, 1250 R32 floater tires SN: 508370
- #3 Feterl Truck Auger – 8"X34', elec. motor
- #2 J&M Gravity Wagon – 500 bu., rear brakes, HD gear, 18X22.5 rubber
- #1 Heider Wagon – 7'x12', Heider gear, Midwest hoist



**AUCTIONEERS NOTE:** Charles turned 75 and is retiring and will sell the following equipment with no reserves. Most equipment was bought new or 2nd owner. Most equipment was always shedded and will be field ready.

**Don't miss this sale if you want clean equipment.**

**TERMS:** CASH , Wire Transfer or Cashier's Check. If not known by Auction Company a bank letter of guarantee would be appreciated. Nothing is to be removed until settled for. A 4% buyer's premium will be applied to all on-line purchases with a \$1,000.00 maximum on each item. All sales are FINAL. All items are sold AS IS WHERE IS without warranty expressed or implied. Auctioneer will have the final say in all sales. This is an absolute sale to the highest bidder.

## Charles Lindberg, Owner

**For further questions call Charles 712-675-4656 (home) or 712-661-9501 (cell) between the hours of 8 a.m. to 5 p.m. or call Denison Livestock Auction 712-263-3149 or JR Pauley 712-269-7777.**

**Pauley Family Auction Services LLC, Auctioneers • 712-263-3149 or JR 712-269-7777**

**ONLINE BIDDING STARTS AT 12 NOON**

## Equipmentfacts™

Powered by TractorHouse.com, MachineryTrader.com, TruckPaper.com & MarketBook.com

<https://www.equipmentfacts.com/listings/upcoming-auctions/>